

COMPANY PROFILE

Community Development & Transformation

A non-profit company (NPC) offering practical community-based solutions to Africa's socio-economic development challenges.

www.beulahafrica.co.za

CONTENT

BEULAH AFRICA GROUP OF COMPANIES02

BEULAH AFRICA FOUNDATION COMPANY OVERVIEW.....03

BEULAH AFRICA FOUNDATION PROGRAMMES OVERVIEW.....04

DEVELOPMENT PHILOSOPHY.....05

IMPACT FRAMEWORK.....06

ECONOMIC EMPOWERMENT PROGRAMME.....07

SUSTAINABLE COMMUNITY DEVELOPMENT PROGRAMME ... 09

IMPLEMENTING AGENT..... 11

BURSARY PROGRAMME.....13

PAST PROGRAMME EXPERIENCE..15

IMPACT.....18

TESTIMONIALS.....19

PARTNER WITH US IN CREATING SUSTAINABLE CHANGE.....20

BEULAH AFRICA GROUP LEADERSHIP TEAM21



BEULAH AFRICA GROUP OF COMPANIES

Beulah Africa is a dynamic group of social enterprises, focused on the socio-economic development of Africa to facilitate sustainable change.

Founded in 2013, Beulah Africa has vast experience in designing, consulting, and implementing large-scale human and community development programmes in the private, public and NGO sectors of South Africa.

Africa is a blessed continent. It is overflowing with the potential for wealth, innovation, and inspiration. And yet our current reality in the continent and country is unfortunately not reflecting this potential. Our story is still painted with poverty, brokenness and dependencies. But, as Beulah Africa, we firmly believe this picture can and should change.

We are motivated by hope and compelled by love to play a role in Africa's transformation. We exist to unearth the potential that lives in its people's hearts and land.

**CREATING
SUSTAINABLE
CHANGE**



FOUNDATION

A non-profit company (NPC) offering practical community-based solutions to Africa's socio-economic development challenges.



CONSULTING

A socio-economic consultancy, focused on enabling Africa's natural resources industries to be the primary drivers of Africa's development.



TRAINING

An empowerment-focused training company providing personal, leadership and socio-economic skills development in Africa.

BEULAH AFRICA FOUNDATION COMPANY OVERVIEW

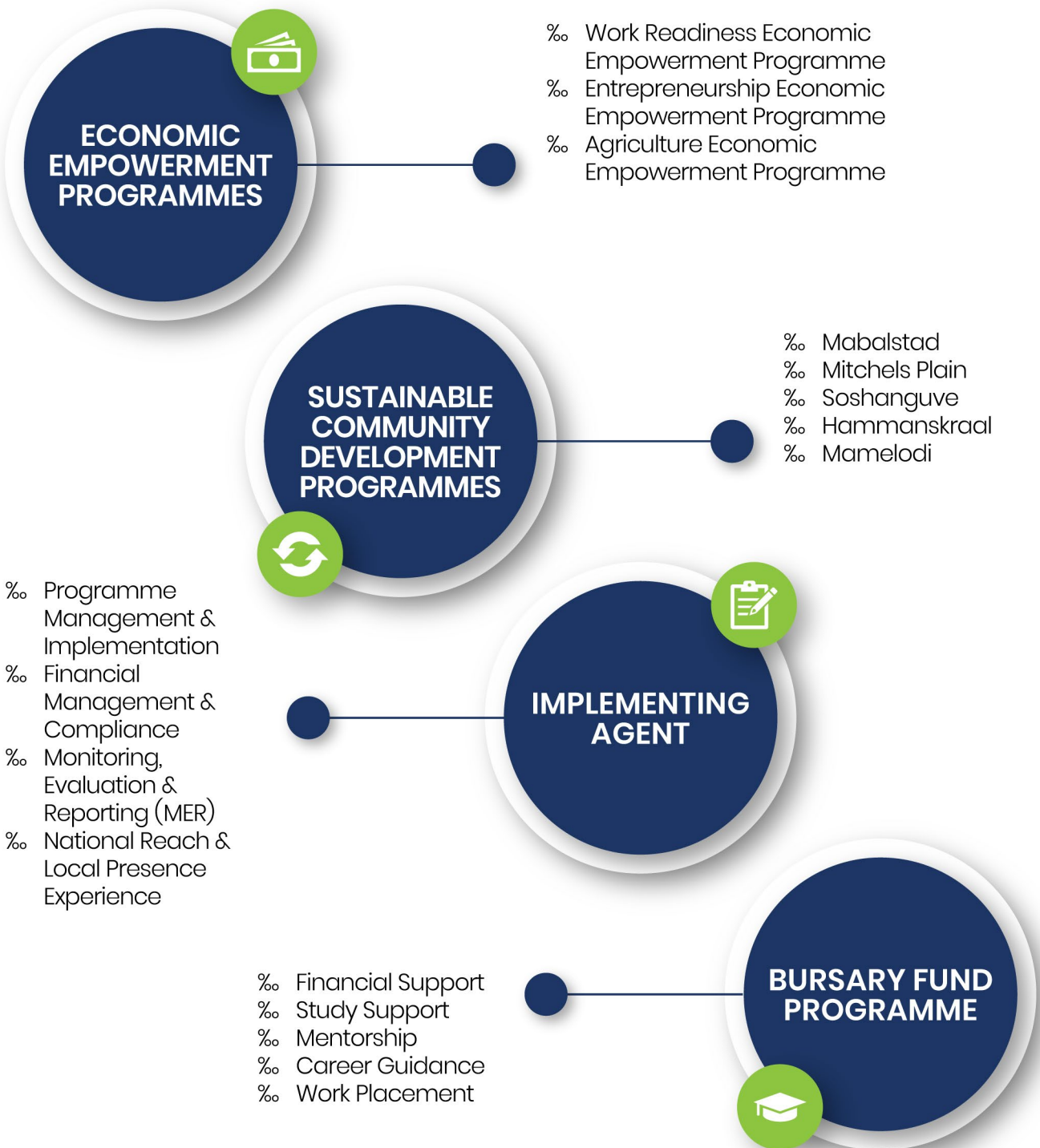
Beulah Africa Foundation is non-profit company (NPC) that offers practical community-based solutions to Africa's socio-economic development challenges.



Our mission is to **break the cycle of poverty and moral decay in communities**, changing lives and transforming communities through economic empowerment and sustainable community development programmes.

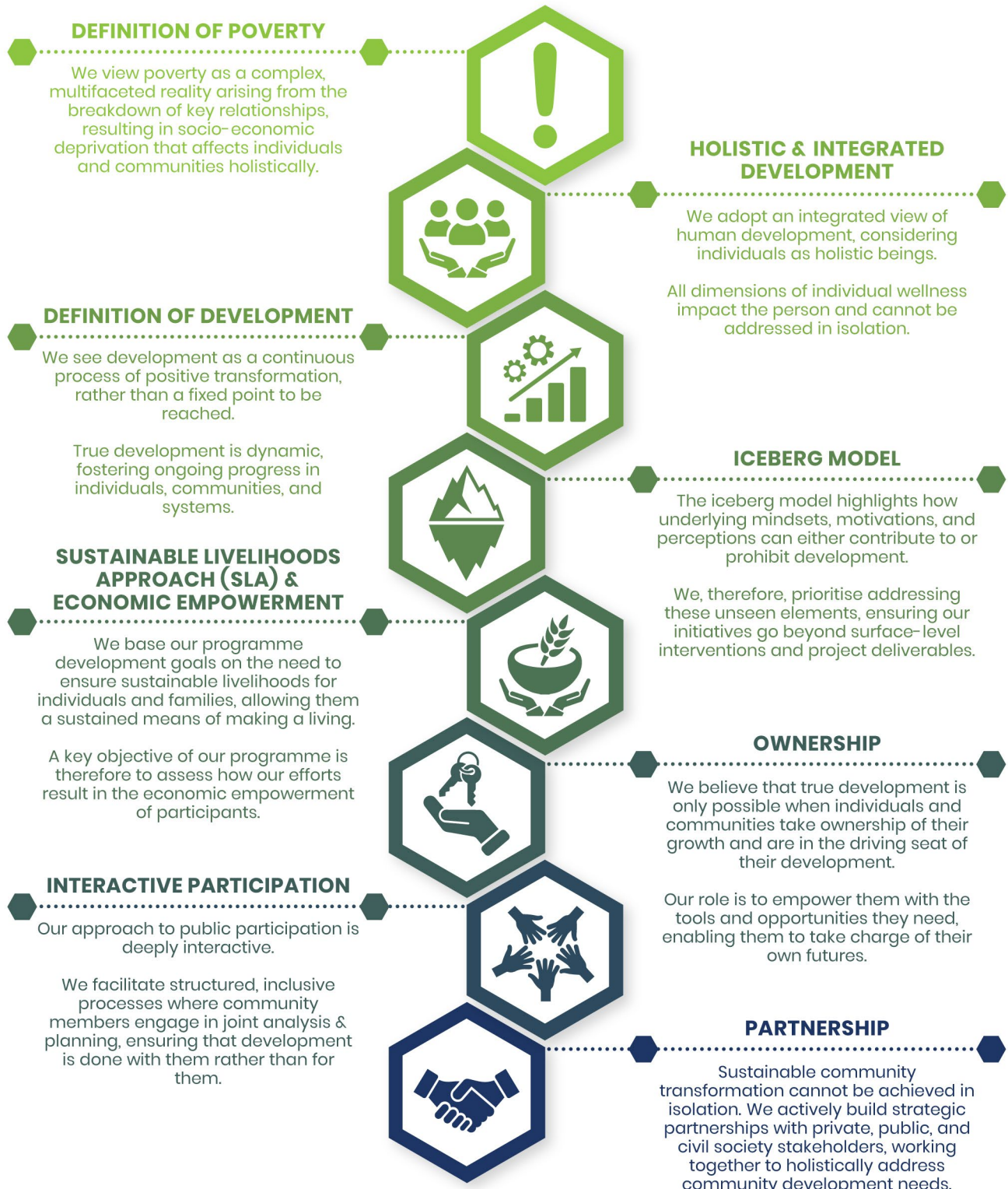
BEULAH AFRICA FOUNDATION PROGRAMMES OVERVIEW

We achieve our mission through economic empowerment and sustainable community development programmes.



DEVELOPMENT PHILOSOPHY

At Beulah Africa, our development philosophy is deeply rooted in our values and development principles, and can be summarized as follows:

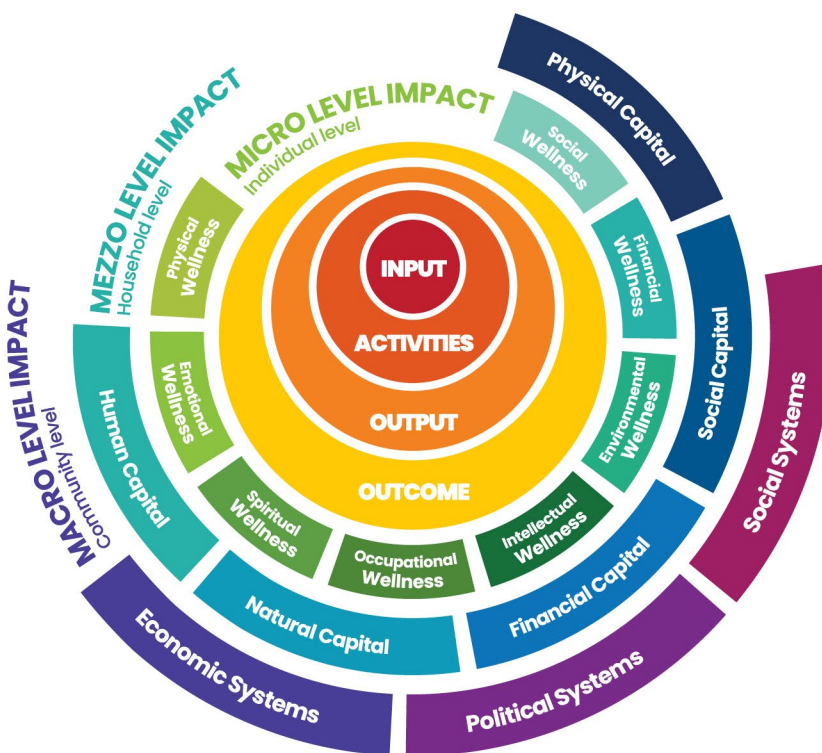


IMPACT FRAMEWORK

Beulah Africa's transformational philosophy explains the method of how our community engagements and training interventions are expected to bring about the desired impact in the long term.

We believe development initiatives' impact should mainly be viewed and measured from the perspective of the individual, household and community of the participant and not from a donor or client perspective per say. Our aim is to measure impact on three levels as indicated below.

Our desire is to see communities transformed. To effect real sustainable transformation, you need healthy individuals as well as healthy community structures. We believe that beulified individuals will bring about positive change within their communities.



MICRO LEVEL Personal Level

Measured according to the eight domains of personal wellness.

MEZZO LEVEL Household Level

Measured according to the five livelihood capitals based on the Sustainable Livelihood Approach.

MACRO LEVEL Household Level

Measured in terms of impact on economic, social and political structures and systems.



ECONOMIC EMPOWERMENT PROGRAMMES

The Beulah Africa Economic Empowerment Programmes unlock the potential within individuals, helping them discover their own skills, talents, and passions, and using these to improve their livelihoods.

Our goal is to help individuals find pathways to greater economic independence, whether through securing meaningful employment or creating their own income-generating opportunities. The programmes we offer are flexible and designed to meet people where they are, recognising that each person's journey is unique. By providing the right tools and resources, we empower participants to overcome challenges, create lasting change in their lives, and build stronger communities.

Every programme is shaped by the community it serves. We take the time to listen deeply to the needs, aspirations, and realities of the people we work with, ensuring our approach is rooted in the local context. Our aim is to address the most pressing challenges faced by vulnerable groups and equip them with the skills and opportunities to thrive. Whether it's through agriculture, work readiness, or entrepreneurship, our programmes are designed to provide the support needed to reduce vulnerability, create sustainable livelihoods, and foster long-term, positive change.



WORK READINESS ECONOMIC EMPOWERMENT PROGRAMME

The Work Readiness Economic Empowerment Programme exists to create lasting change in the lives of individuals by addressing the gap between available work opportunities and the ability to match those opportunities.

It's a comprehensive programme designed to equip individuals with essential skills for a seamless transition into the workplace. It responds to the urgent need for better opportunities and pathways out of poverty for those who are most vulnerable. This programme is not just about skills training; it's about giving individuals the confidence, guidance, and support they need to build a brighter future for themselves and their families. By providing access to mentorship, work placements, and tailored training opportunities, we empower participants to not only find employment but to thrive in it. This holistic approach helps them see new possibilities for their lives and equips them with the tools to seize them.

Our Work Readiness Economic Empowerment Programme is specifically crafted to tackle issues such as economic vulnerability, youth unemployment, and the lack of sustainable livelihoods. Ultimately, our goal is for every participant to gain the skills, confidence, and ability to match their skills with available opportunities, ensuring they are well-prepared to access and retain employment.



ENTREPRENEURSHIP ECONOMIC EMPOWERMENT PROGRAMME

The Entrepreneurship Economic Empowerment Programme is designed to help individuals and communities break free from poverty by providing the tools and resources needed to start their own

businesses. In many rural areas, economic opportunities are limited, and people struggle to provide for themselves and their families. Entrepreneurship offers a way forward—an opportunity to create self-sustaining livelihoods, provide for families, and contribute to local economic growth.

Through entrepreneurship training, participants learn the fundamentals of running a business, from developing a clear business plan to executing it with confidence. Beyond this, they receive ongoing mentorship and, in many cases, technical skills training to ensure they have the capability to succeed. To give them a real chance of success, we also provide essential startup grants, helping turn their business ideas into reality. More than just business skills, the programme ignites hope and resilience in communities facing socio-economic challenges. By building on local strengths, we create a foundation for sustainable change. We focus on the most vulnerable groups, ensuring they have the tools and opportunities to transform their lives.

The Entrepreneurship Economic Empowerment Programme is about more than just starting a business; it's about creating a future where individuals have the confidence, skills, and resources to shape their own success.

AGRICULTURE ECONOMIC EMPOWERMENT PROGRAMME

The Agriculture Economic Empowerment Programme empowers individuals in rural communities to transform their lives through starting agriculture businesses. In many rural areas, where economic opportunities are scarce, agriculture offers not only a means of survival but also a way to build self-sufficiency, create sustainable livelihoods, and strengthen the local economy. Our aim is to empower individuals to take ownership of their development, creating a ripple effect that benefits entire communities.



Through the Agriculture Economic Empowerment Programme, we provide participants with the skills and knowledge to turn agriculture into a thriving business. This includes both practical farming skills and entrepreneurship training, supported by grants and ongoing mentorship. With these tools, participants are not only able to improve their own lives but also to start agricultural businesses, contributing to the wider community and creating a circular economy where everyone can benefit.

The Agriculture Economic Empowerment Programme is designed for communities seeking to reduce economic vulnerability, establish sustainable livelihoods, and create lasting agricultural businesses. It is not just about farming—it is about giving individuals the confidence, skills, and support they need to build a better future for themselves and their families.

SUSTAINABLE COMMUNITY DEVELOPMENT PROGRAMME

One of our key focus areas is our Sustainable Community Development Programme, which is grounded in the belief that development is a long-term journey of positive, transformative change that should be locally owned and driven.

We select specific areas where we can remain present over an extended period, running multiple interconnected programmes at each location to ensure lasting impact. Before implementing any initiative, we conduct a thorough Socio-Economic Community Needs Assessment using both primary and secondary data. This allows us to understand the unique dynamics of the community and ensure that the programmes we design are relevant and fit for purpose.

Our approach goes beyond simply delivering services—we motivate communities to take ownership of their development, empowering them to create and pursue a shared vision for their future. We work closely with them to develop actionable plans and provide ongoing support to help them start executing their strategies to achieve this vision. Understanding that development is a multi-faceted process, we assemble a diverse, multi-disciplinary team and foster collaboration between public, private, and civil sector stakeholders to drive sustainable change.

We commit long-term to the communities we serve, employing skilled local site staff who are expert community development practitioners dedicated to facilitating positive transformation within their own context. We support these communities by rolling out our own programmes, such as our Economic Empowerment Programme, to further strengthen their capacity and promote self-sufficiency. By taking this integrated, sustained approach, we help build resilient communities that can thrive independently in the future.

Our Sustainable Community Development Programmes



MABALSTAD is a rural community struggling with food insecurity, economic exclusion, and various social ills. We have been invited by the royal family to contribute to bringing hope and transformation to the area. Since June 2023, we have been actively engaged in the community, commencing with a comprehensive community needs assessment that informed our strategy for moving forward.

Our current efforts focus on implementing an agricultural empowerment programme. This initiative tackles poverty mindsets, food insecurity, agricultural entrepreneurship, and personal discipleship. Our vision for Mabalstad is a thriving, self-sufficient community that advocates for social justice and resists moral decay. We aim to achieve increased food security and local ownership in community development.



MITCHELLS PLAIN is a community faced with numerous socio-economic challenges, where many young people struggle with poverty, unemployment, and exposure to gang violence, hindering their opportunities for a bright and prosperous future.

We are implementing work readiness economic empowerment programmes for young people. The initiatives equip individuals with essential skills to transition to the workplace and assist with finding and accessing opportunities. Our shared vision is to see young people who are self-motivated and empowered to become economically active and change their circumstances.

SOSHANGUVE is a township plagued by high levels of unemployment, poverty, and crime, with inadequate access to basic services, which severely impacts the overall quality of life for its residents, particularly the youth.



We are implementing work readiness and entrepreneurship economic empowerment programmes for young people. These initiatives equip them with the skills to either find employment and enter the workplace or start their own entrepreneurial ventures. Our shared vision is to see young people become less vulnerable due to an increase in their economic income through employment or self-employment.



HAMMANSKRAAL is a peri-urban area grappling with significant development challenges, including entrenched poverty, inadequate services, inequality, and food insecurity, amidst its rapidly growing population.

We were invited by the community to partner with local farmers to roll out our agricultural economic empowerment programme. There is a pressing need for sustainable agricultural businesses. Our shared vision is to restore the agriculture culture that once thrived. By reviving this sector, we aim to address social issues like poverty, inequality, and food insecurity. Agriculture has the power to transform lives, create jobs, and stimulate local economies.

MAMELODI is a township confronted with extreme realities of poverty, unemployment, and food insecurity, compounded by social ills such as substance abuse, teenage pregnancy, and crime, eroding the moral fabric of the community.



In partnership with a local church, we identified youth unemployment as a pressing concern through a community needs assessment. We're launching two economic empowerment programmes: Work Readiness and Entrepreneurship. Our shared vision is to bridge the gap to opportunities, creating a thriving local economy that tackles unemployment and social ills. We're building a pathway to self-sufficiency, fostering a brighter future for young people and the community.

IMPLEMENTING AGENT

Beulah Africa Foundation has extensive experience as Implementing Agent, partnering with development agencies, companies, and governments to deliver their programmes effectively.

We are driven by a passion for empowering communities and individuals to reach their full potential and are proud to support other organisations achieve their objectives through our programme implementation. We are dedicated to delivering high-impact community development programmes that improve the lives of individuals and communities. Our commitment to excellence, integrity, and social impact distinguishes us as a reliable and effective partner in community development.

Expertise in Programme Management and Implementation

Our team brings exceptional expertise in community development project implementation, ensuring that every aspect is well planned, executed, and monitored. Through seamless collaboration between our management team and field staff, we guarantee the success of every project. Our management team oversees the entire programme lifecycle—from planning and contracting to final reporting and closure. With extensive experience in managing large-scale programmes, we meet client targets and design, ensuring the highest standards at every stage. Our seasoned field staff work directly with communities and beneficiaries to implement programmes effectively on the ground. With a deep understanding of local needs, they engage closely with diverse groups—from rural communities to vulnerable individuals—ensuring each programme has a meaningful, lasting impact. By combining strategic oversight with on-the-ground expertise, we deliver thoughtfully planned, precisely executed programmes that achieve sustainable results for the communities we serve.





Meticulous Financial Management and Compliance

As a public benefit organisation, we adhere to the highest standards of governance and financial management, ensuring compliance with the Public Finance Management Act (PFMA), where applicable, and other relevant regulatory frameworks. We maintain meticulous records and undergo regular audits to guarantee transparency and accountability. Our governance structure ensures compliance with all requirements for non-profit organisations, including legal obligations set out by the South African Revenue Service (SARS), and is rooted in the principles of good governance, transparency, and accountability. In addition, our Board of Directors plays a vital role in overseeing the strategic direction of the organisation. Composed of experienced professionals, the Board is responsible for ensuring compliance with legal and regulatory standards, providing effective oversight, and ensuring that our operations remain aligned with the Foundation's mission and values. The Board also monitors financial performance, risk management, and the overall impact of our programmes, ensuring that Beulah Africa Foundation remains accountable to its stakeholders and upholds the highest standards of governance.



Monitoring, Evaluation, and Reporting (MER) Expertise

At Beulah Africa Foundation, we bring extensive experience in Monitoring, Evaluation, and Reporting (MER) as Implementing Agents. We are skilled in adapting to the MER frameworks outlined by our clients, ensuring that every programme is tracked, assessed, and reported in accordance with the client's tender requirements. Our team ensures that all data collection, verification, and reporting processes meet the highest standards, providing accurate and timely reports to stakeholders, including donors, partners, and government agencies. We are committed to transparency and accountability, ensuring that the outcomes we report reflect the true impact of each programme. We work closely with clients to understand their MER requirements and adapt our processes to meet their specific data points, reporting cycles, and compliance standards. Our goal is to ensure that all programmes are effectively monitored and evaluated, with data that drives informed decision-making and demonstrates long-term impact. Through this tailored approach, Beulah Africa Foundation ensures that every programme we manage delivers measurable results and meets the expectations set out by our clients.



National Reach and Local Presence Experience

As an Implementing Agent, we have the capability to manage and execute programmes across multiple sites simultaneously. We have successfully overseen up to 19 sites at once, with dedicated teams at each location, ensuring efficient and effective implementation. Our experience spans across 8 provinces, working in both semi-urban and rural areas, including townships around urban centres, which are often considered semi-urban or para-urban. This diverse geographical reach enables us to address the unique needs of various communities, while our local presence ensures we remain grounded in the realities of those we serve. Wherever possible, we employ local staff, fostering community involvement and ensuring that our teams are well-connected to the areas they work in. We collaborate with local partners when needed, establishing sites and adapting our approach to suit the specific needs of each community. Our robust management systems allow us to report on each site individually, as well as provide consolidated reports for the entire programme, ensuring both local relevance and national oversight.

BURSARY PROGRAMME

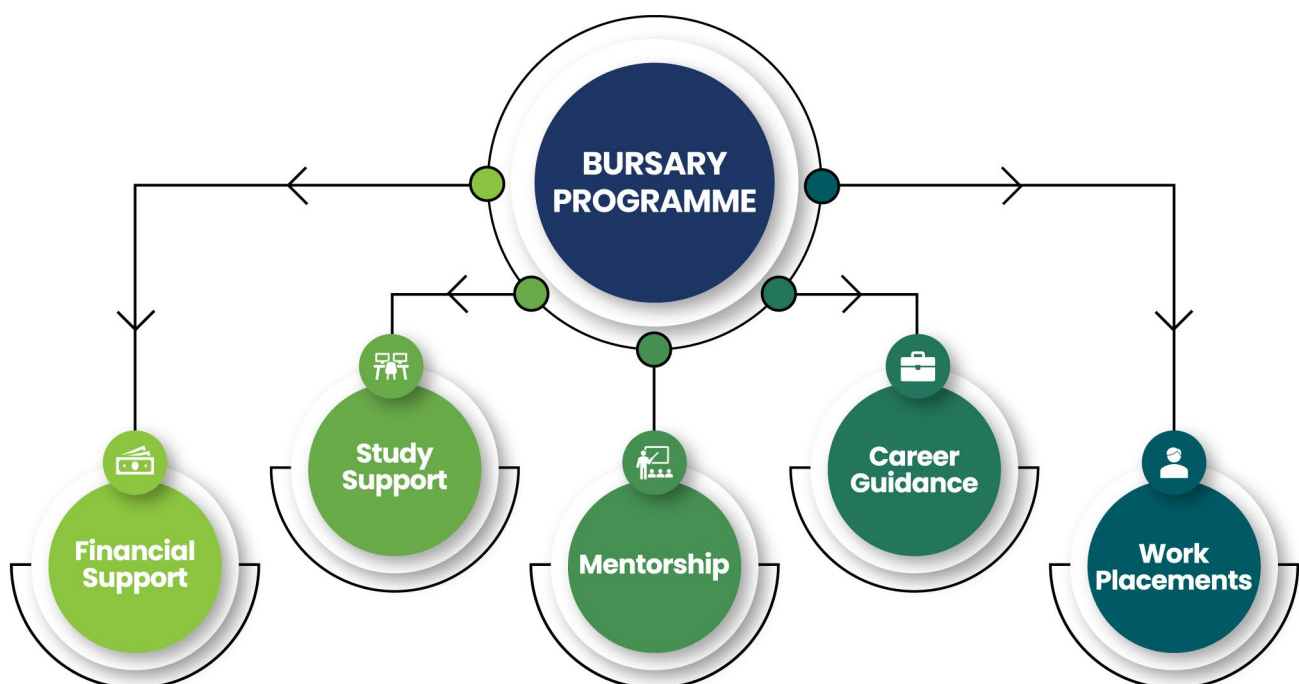
At Beulah Africa, we believe that education is the key to breaking the cycle of poverty—not just for an individual, but for their entire family.

Since 2015, we have been committed to facilitating bursary programmes that provide underprivileged but deserving students—both in school and at tertiary level—with the financial, social, and emotional support they need to succeed. By empowering students through education, we are creating a ripple effect that extends to their families, communities, and future generations.

We take a holistic approach to supporting bursary students, recognising that financial aid alone is not enough to ensure success. Our programme focuses on building strong, lasting relationships with each student, offering academic, social, and spiritual support. This comprehensive support ensures that students not only have the means to succeed but also the guidance, resilience, and confidence to overcome challenges along the way.

We are deeply committed to nurturing future leaders who will not only thrive academically but also give back to their communities. By investing in the education and development of young people, we are investing in Africa's future. The Beulah Africa Bursary Programme is more than just financial assistance; it's about transforming lives, building hope, and opening doors to a brighter future for individuals and their families.

The Beulah Africa Bursary Programme is designed to support students on their educational journeys, whether they are still in school or pursuing tertiary education. Our aim is to provide holistic support that addresses both academic and personal challenges, helping students build the confidence, skills, and resources necessary to achieve their dreams and become the leaders who will shape Africa's future.



Financial Support



The Beulah Africa Bursary Programme provides financial assistance to ensure that deserving students can access quality education. This includes funding for school fees, tertiary education (both public and private institutions), and living expenses. While government initiatives like NSFAS help with some of the funding for tertiary education, many students still face significant financial gaps. The bursary provides vital support, covering additional costs such as transport to universities, accommodation deposits, books, stationery, and basic necessities like clothing and toiletries—expenses that often arise before the official disbursement of NSFAS funding. In addition, we assist students who want to study specialised courses, which may not be fully funded by NSFAS, allowing them to pursue education at private institutions.

Study Support



The education gaps faced by many students, especially those from rural and underprivileged backgrounds, often put them at a disadvantage when it comes to academic performance. To bridge these gaps, the programme provides study support to ensure that students have the necessary resources and academic guidance to succeed. This can include tutoring or extra lessons in subjects where they may need additional help, enabling them to stay on track and perform at their best.

Mentorship



A key component of the Beulah Africa Bursary Programme is mentorship, which goes beyond academic support to provide emotional and social guidance. We recognise that the transition to higher education, especially for students moving from rural areas to large cities, can be a daunting experience. Students often face feelings of isolation, cultural dislocation, and academic pressure. Our mentorship programme pairs each bursary student with a trained mentor who offers psychosocial support. This relationship helps students navigate the challenges of adjusting to new environments, developing resilience, and building the confidence they need to thrive. Mentors also provide support in critical areas such as professional behaviour, time management, communication, and financial literacy, ensuring that students not only succeed academically but also acquire the soft skills necessary to excel in the workplace.

Career Guidance



Many students, particularly those in high school, lack access to resources that could help them make informed decisions about their future career paths. As part of our mentorship programme, our career guidance aims to bridge this gap by offering advice on selecting the right course or field of study based on the student's interests and strengths. Mentors play a key role in guiding students through career choices, internships, and job applications. Furthermore, we also help them develop essential work-readiness skills such as CV writing, interview coaching, professional behaviour, and work ethics. The goal is to prepare students not only for their studies but also for the challenges and opportunities they will face after graduation.

Work Placements



A key challenge many graduates face is a lack of work experience. To address this, we offer internships and work placements that provide students with the vocational skills needed to succeed. These opportunities bridge the gap between academic studies and the real-world workplace, helping students build their CVs, gain practical knowledge, and become more employable. We also provide leadership and life skills training, equipping students to lead, communicate effectively, and navigate complex situations. Through mentorship, career guidance, and academic support, we ensure that students are prepared for the challenges of higher education and the workplace, empowering them to become the role models who will lead the next generation.

PAST PROGRAMME EXPERIENCE OVERVIEW



- North-West**
18 Municipalities
- Apr '18 – Sep '21**
- Beneficiaries**
21,850
- Programme Value**
R 975,204,137

Community Works Programme (CWP) – CoGTA

CWP is a South African government initiative by the Department of Corporate Governance and Traditional Affairs (CoGTA), providing social security through employment and a basic income to people in marginalized areas, aiming to aid public services and address poverty and unemployment.

GLO Full Economic Strengthening Livelihoods Programme – NACOSA

The GLO Full programme was a comprehensive Economic Strengthening Livelihoods Programme aimed to empower vulnerable youth, who were not in employment, education, or training (NEET), with skills, tools, and opportunities to secure livelihoods and create sustainable futures.



- Soshanguve, Gauteng**
- Apr '20 – Mar '22**
- Beneficiaries**
845
- Programme Value**
R 13,220,882



- NW & WC**
8 Communities
- Aug '21 – Mar '22**
- Beneficiaries**
4,147
- Programme Value**
R 23,356,147

GLO Light Economic Strengthening Livelihoods Programme – NACOSA

GLO Light was a condensed version of the GLO Full Economic Strengthening Livelihoods Programme, designed to empower vulnerable youth who were Not in Employment, Education, or Training (NEET) with essential skills, tools, and opportunities to improve their livelihoods and create sustainable futures.

SWEE – NACOSA

The Sex Workers Economic Empowerment (SWEE) Programme aimed to reduce economic vulnerability and social ills among sex workers by empowering them with new mindsets, skills, and mentorship, supporting their transition to better livelihood opportunities through employment or entrepreneurship.



- LP & GP**
4 Communities
- Dec '20 – Mar '22**
- Beneficiaries**
106
- Programme Value**
R 1,952,456



-  LP & NW
12 Communities
-  Apr '23 – Nov '23
-  Beneficiaries
227
-  Programme Value
R 3,358,080

The Anglo American Platinum (AAP) Programme – NACOSA

The AAP Programme specifically supports victims of Gender-Based Violence (GBV) in rural mining areas, aiming to mitigate their vulnerability by providing livelihood skills training and economic empowerment opportunities that promote economic stability.

Adolescent Young People (AYP) Programme – AFSA

The AYP Programme targets vulnerable youth who are not engaged in employment, education, or training, providing them with training and subsequent placement opportunities in education or employment, ultimately leading to sustainable livelihoods and reduced economic vulnerability.



-  NW, KZN & MP
13 Communities
-  Jul '24 – Mar '25
-  Beneficiaries
1,726
-  Programme Value
R 2,061,144



-  WC, NC, GP
10 Communities
-  Jun '23 – Mar '25
-  Beneficiaries
2,603
-  Programme Value
R 11,462,000

Adolescent Young People (AYP) Programme – NACOSA

The AYP Programme targets vulnerable youth who are not engaged in employment, education, or training, providing them with training and subsequent placement opportunities in education or employment, ultimately leading to sustainable livelihoods and reduced economic vulnerability.

Umtombo Marketplace Programme – LIV Village

The programme is a comprehensive entrepreneurship initiative designed to equip and skill women with the necessary mindset shifts, practical and leadership skills, and knowledge to successfully start, grow, sustain, and thrive in their businesses, ultimately leading to financial independence.



-  Durban,
Kwa-Zulu Natal
-  Mar '24 – May '25
-  Beneficiaries
200
-  Programme Value
R 521,532



-  Mabalstad,
North-West
-  Aug '23 – Present
-  Beneficiaries
50
-  Programme Value
R 785,000

Mabalstad AEEP – Beulah Africa Foundation

The Mabalstad Agriculture Economic Empowerment Programme (AEEP) focuses on utilising agriculture as a means to empower the marginalised community, achieve food security, and create sustainable household livelihoods and a circular community economy through agricultural entrepreneurship and development.



If you want to go quickly, go alone;
if you want **to go further, go together.**

– African Proverb



IMPACT

2014 – 2025

We are a dynamic foundation that seeks to leave our demonstrative footprint in South Africa and the rest of Africa.

We want to bring transformation through our unique “**beulification**” approach, where we genuinely love the people we serve, celebrate diversity, and believe every human life has a unique voice.

Unlocking this potential contributes to the symphony of Africa’s rising voice. We value these voices – be it the cry of the individual or the collective voice of communities.



OUR IMPACT STATS

	Communities Engaged and Profiled	62
	Programme Participants	31,508
	Economic Ripple Effect of programmes:	
	Small Businesses Kick-started	163
	Direct Jobs Created	648
	Successful Referrals to other Economic Opportunities	5,090
	Contracts Awarded to Local Service Providers	1,064
	Value of Development Programmes Executed	R 1,010,018,506

TESTIMONIALS



DURBAN



NACOSA

"The Beulah Africa team has provided an excellent service, were extremely professional and NACOSA can confidently recommend Beulah Africa as a preferred supplier for community development programmes, more specifically those that are focused on Economic Empowerment."

- Nacosa

"Beulah Africa's support transformed my life. As a foster care child, I faced many challenges, but with their financial and emotional investment, I was able to focus on my studies and become a top 1% academic achiever in my faculty."

- Mathabee (LLB Graduate)



**AngloAmerican
PLATINUM**

"Beulah Africa's programme was a game-changer. I acquired essential life and business skills, overcoming past failures and regaining hope. My garden, once neglected, is now thriving and inspiring others."

- Mabalstad Programme Participant



BAPHIRING
Traditional Council

"The programme has ignited hope and confidence within me, assuring me that I can succeed regardless of circumstances. I've gained invaluable skills in business growth, financial management and effective leadership."

- LIV Programme Participant



PARTNER WITH US IN CREATING SUSTAINABLE CHANGE

INVITATION TO PARTNER

We're inviting like-minded individuals and organisations to partner with us in transforming communities. We're not just seeking donations; we're looking for collaborative partners who share our vision of economic and social empowerment. Together, we believe meaningful change is possible. Your partnership will help us create lasting impact, fostering thriving communities that flourish socially and economically.

TAX AND B-BBEE BENEFITS

Beulah Africa is a registered Public Benefit Organisation (PBO) with 18A approval, allowing South African taxpayers to claim a tax deduction for their donations. Donations can be made in various forms, including cash transfers, donations in kind, and trading stock. Your support will not only make a meaningful impact but also provide you with tax benefits and B-BBEE Socio-Economic Development (SED) points.

CONTACT US

Please contact us to discuss which programmes and communities you would like to partner with.

 beulah@beulahafrika.co.za

 +27 12 348 0682

 +27 83 306 1157



PEOPLE
CHARACTER
LEADERSHIP
DIVERSITY
INTEGRITY
EXCELLENCE

VALUES

BEULAH AFRICA FOUNDATION LEADERSHIP TEAM



Roné Coetzee – FOUNDER & EXECUTIVE DIRECTOR

EXPERIENCE: Community Development; Public Participation; Sustainable Livelihoods Approaches; Human Resource Development; Project Management; Impact & Social Return on Investment; Corporate Governance.

Introduction to Mining Engineering Certificate (2014) – WITS
Masters in Development Studies (MDS) (2013) – UFS
B.A. Community Development (2010) – UNISA
N.Dip. Pastoral Counselling (2009) – Philadelphia Training Centre

Masekhanya Matsie – EXECUTIVE DIRECTOR

EXPERIENCE: Community Development; Public Participation; Monitoring and Evaluation; Project Management; Impact & Social Return on Investment Measurements; Corporate Governance.

Professional Diploma: Monitoring and Evaluation (2015) – IAMR
Masters in Development Studies (MDS) (2013) – UFS
B. Tech Project Management (2010) – CUT
BSc Microbiology (2006) – UFS



Sicelo Gumede – NON-EXECUTIVE DIRECTOR

EXPERIENCE: Financial Management; Corporate Governance Practices; National Treasury Regulations; Public Finance; Project Management; King IV Reporting; Risk Management; Auditing and Compliance.

Chartered Accountant (2018) – SA
Honours Degree Accounting (2016) – UNISA
BCom Accountant (2010) – UNZN

Eugene Coetzee – GROUP CEO

EXPERIENCE: Project Management; Corporate Governance; Risk Management; Local Economic Development; Stakeholder Management.

Hazard Identification & Risk Assessment (2011) – OHS Academy
Contractual Law Certificate (2011) – Law Academy
Btech Building Science & Quantity Surveying (2008) – Tshwane University of Technology





FOUNDATION NPC

CREATING SUSTAINABLE CHANGE

www.beulahafrica.co.za
beulah@beulahafrica.co.za
+27 12 348 0682

Eugene Coetzee
eugene@beulahafrica.co.za
+27 83 306 1157

Meme Matsie
meme@beulahafrica.co.za
+27 83 95 35358